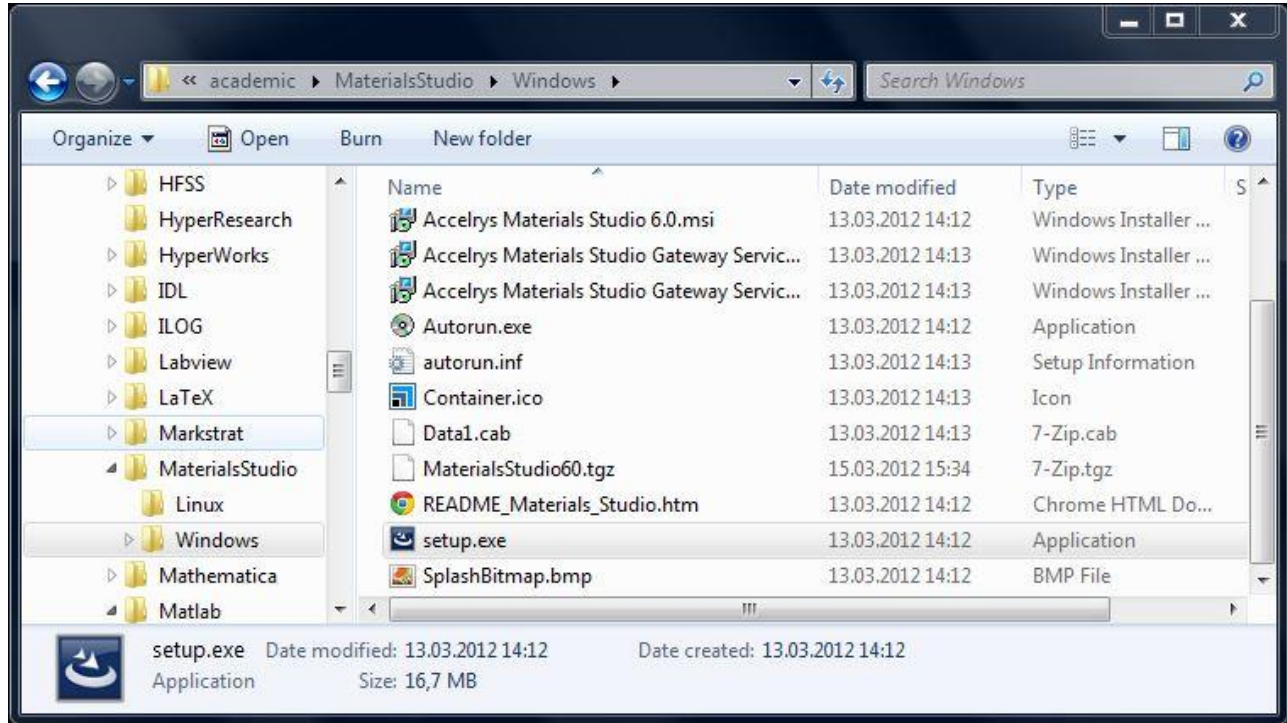
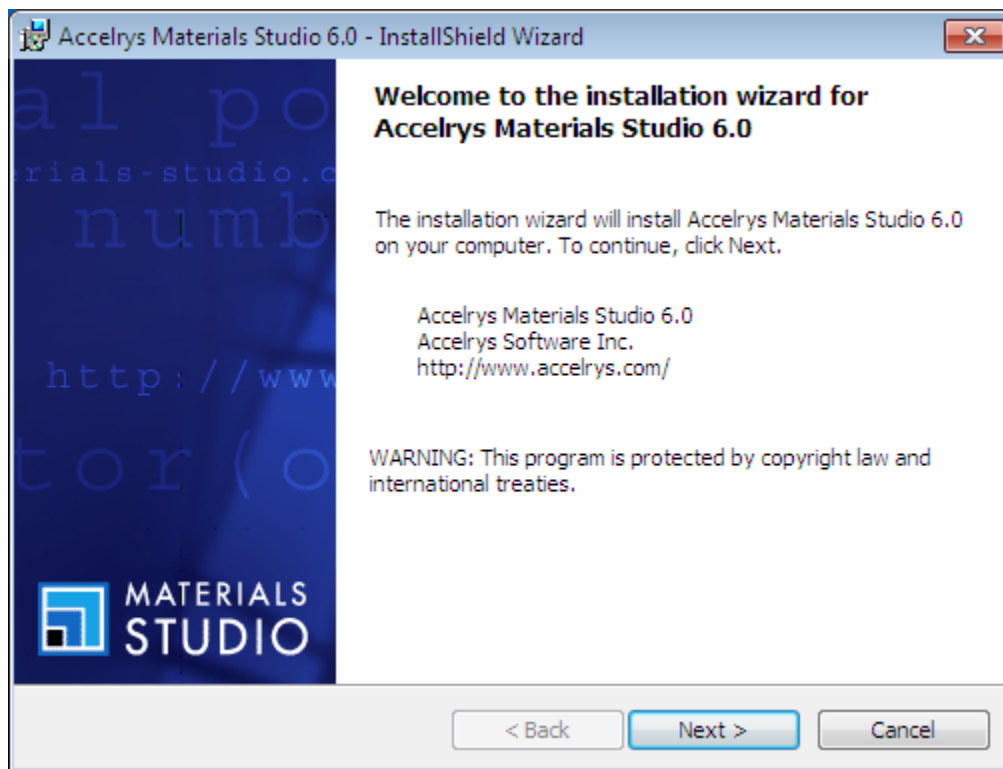


## Materials Studio 2018 Installation on Performetrica HPC Cluster

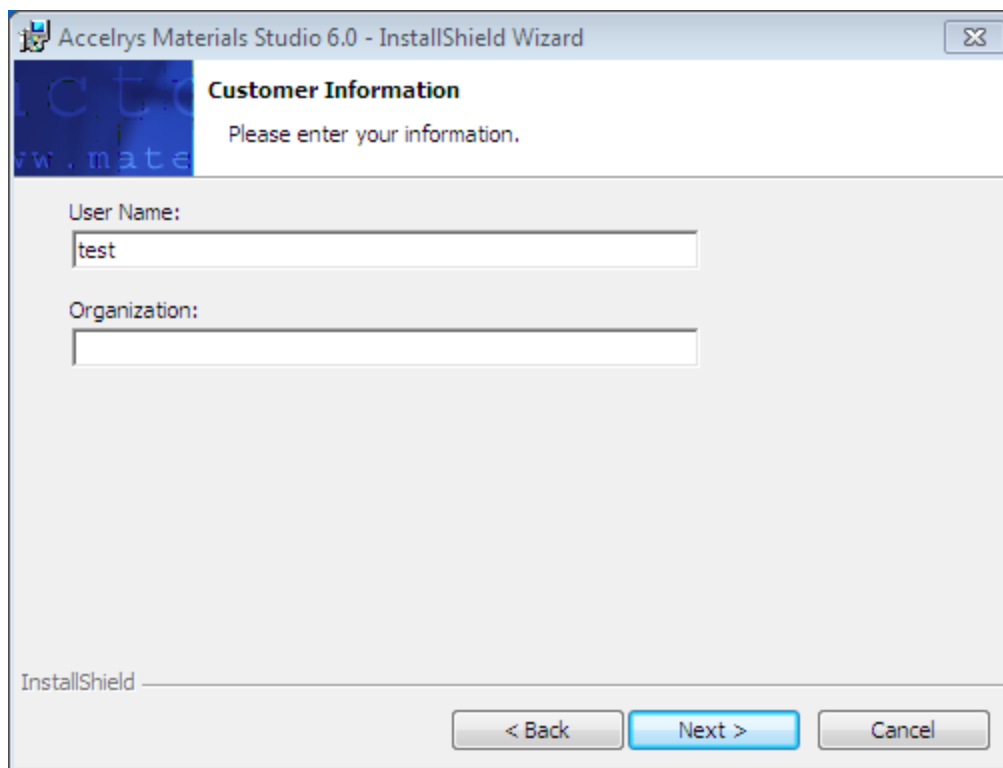
1. Extract the MaterialsStudio2018.exe. Run the setup.exe file in MaterialsStudio2018 directory to start the installation.



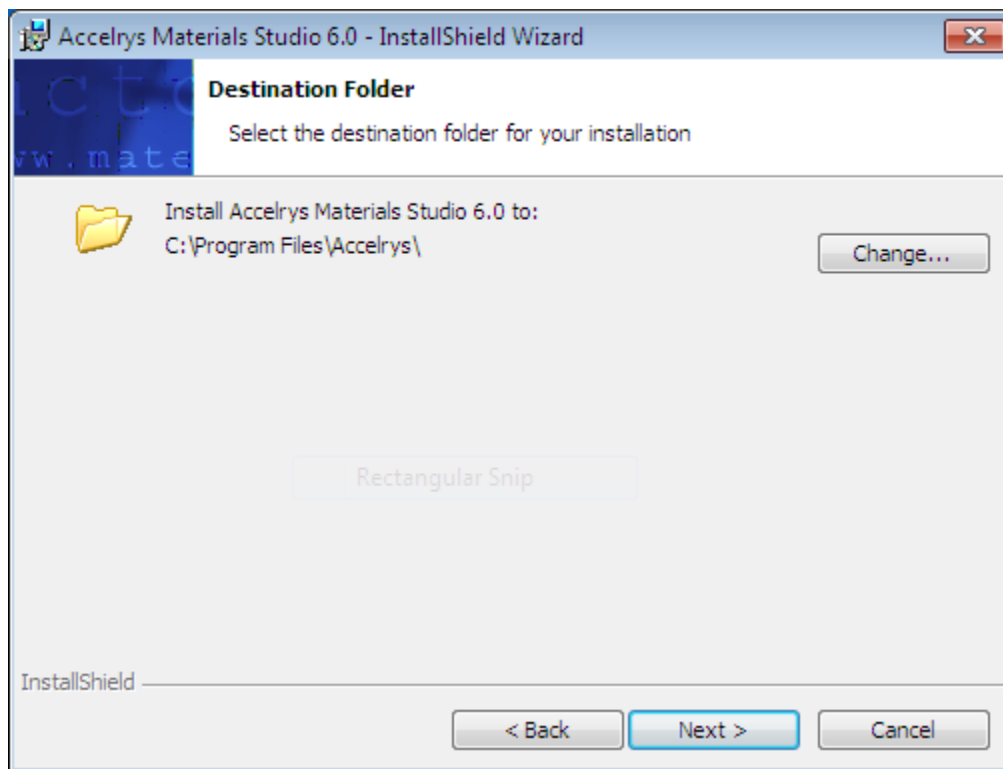
2. Press “Next” button to continue.



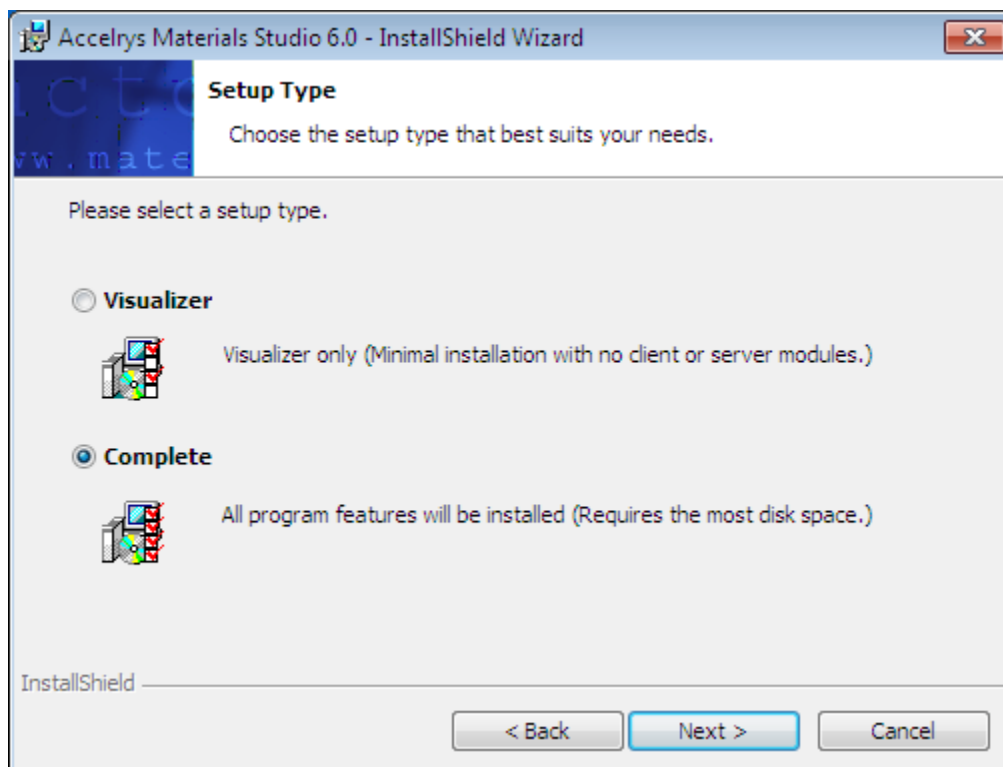
3. Fill in the Username and Organization fields and press "Next" button



4. Select the destination directory and press "Next" button



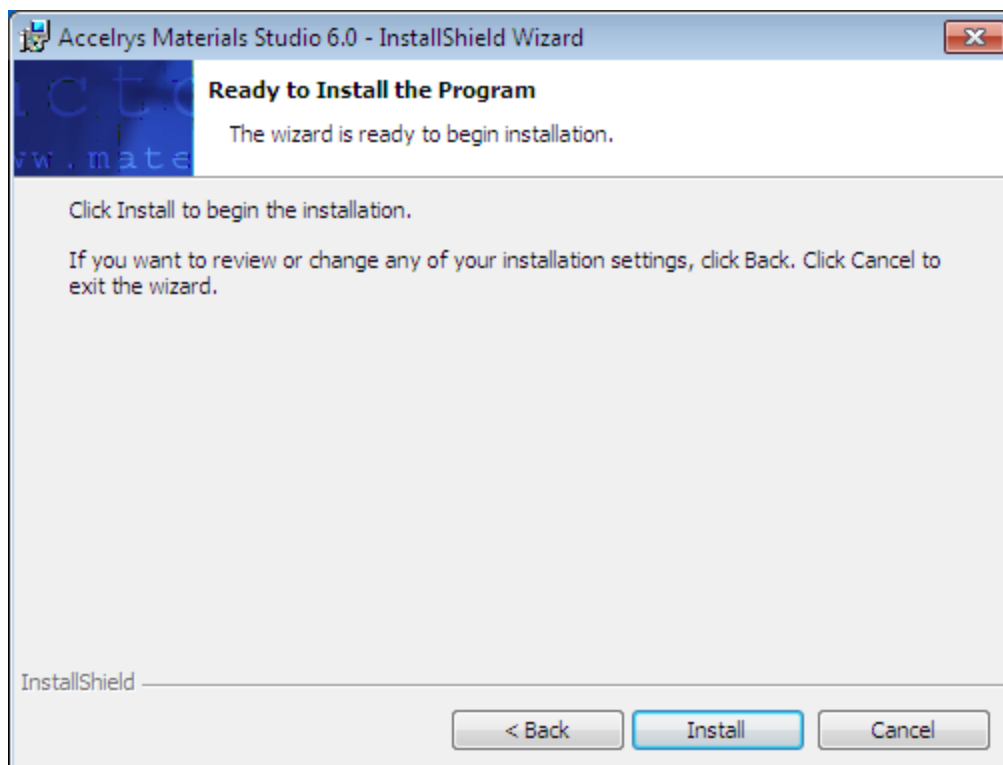
5. Select the “Complete” as setup type and press “Next” button.



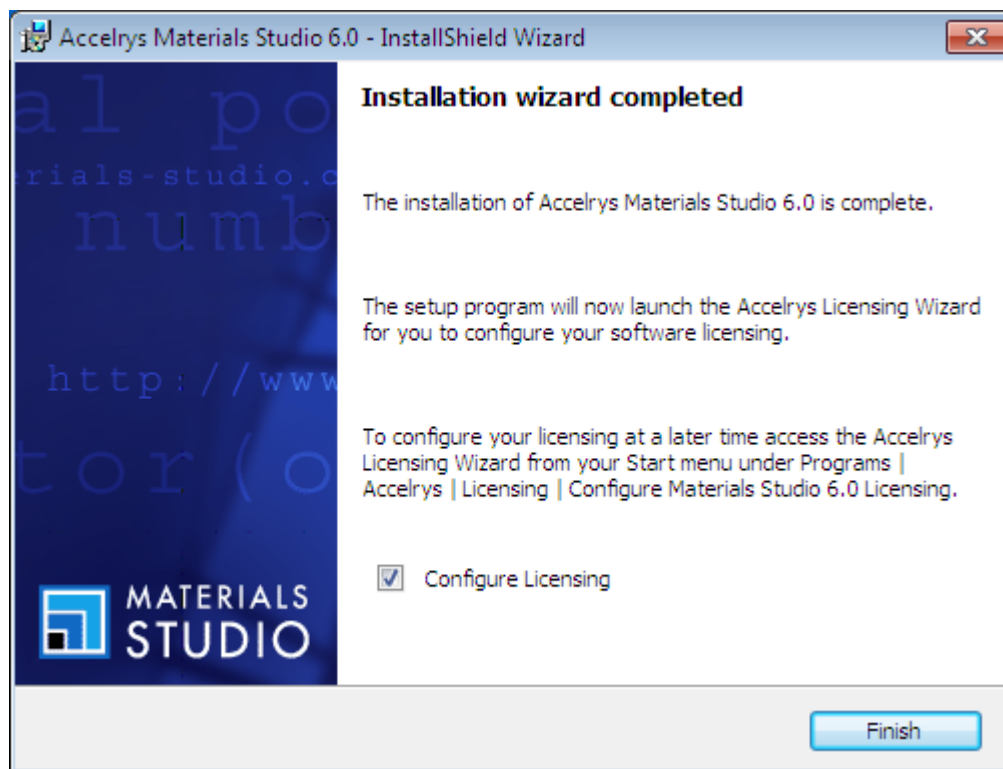
6. Press “Next” button to continue.



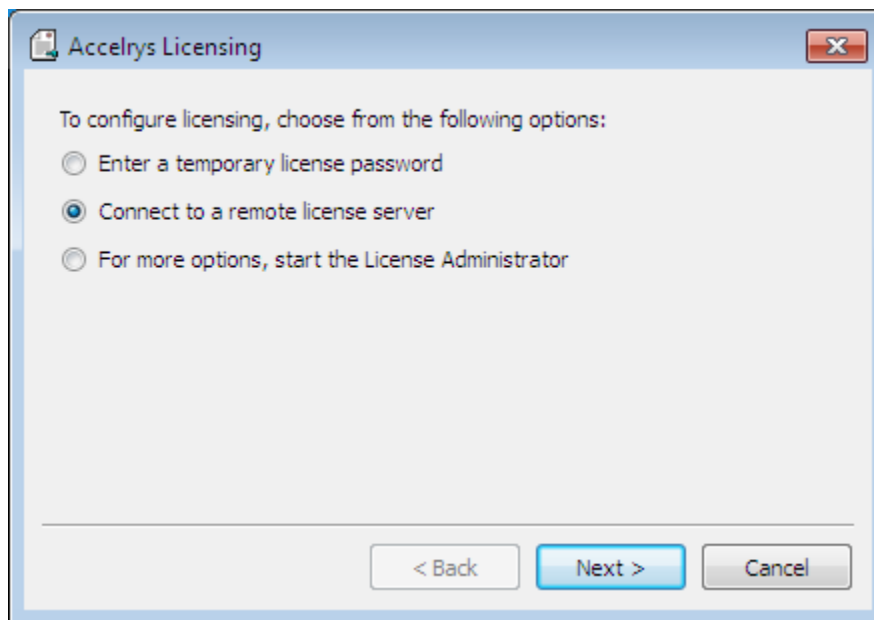
7. Press the “Install” button to continue.



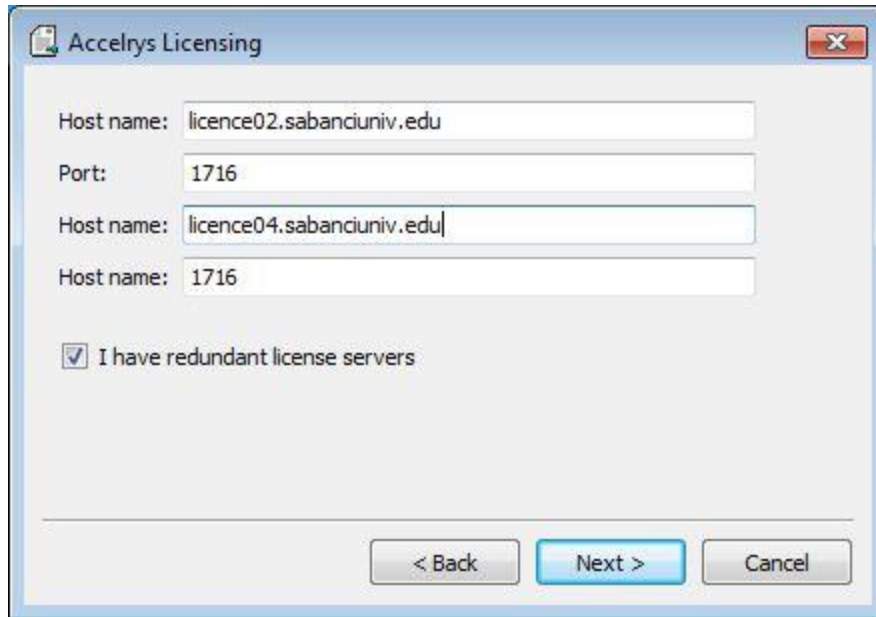
8. Press the “Finish” button to complete installation.



9. Select the middle button “Connect to a remote license server” and press “Next” button.

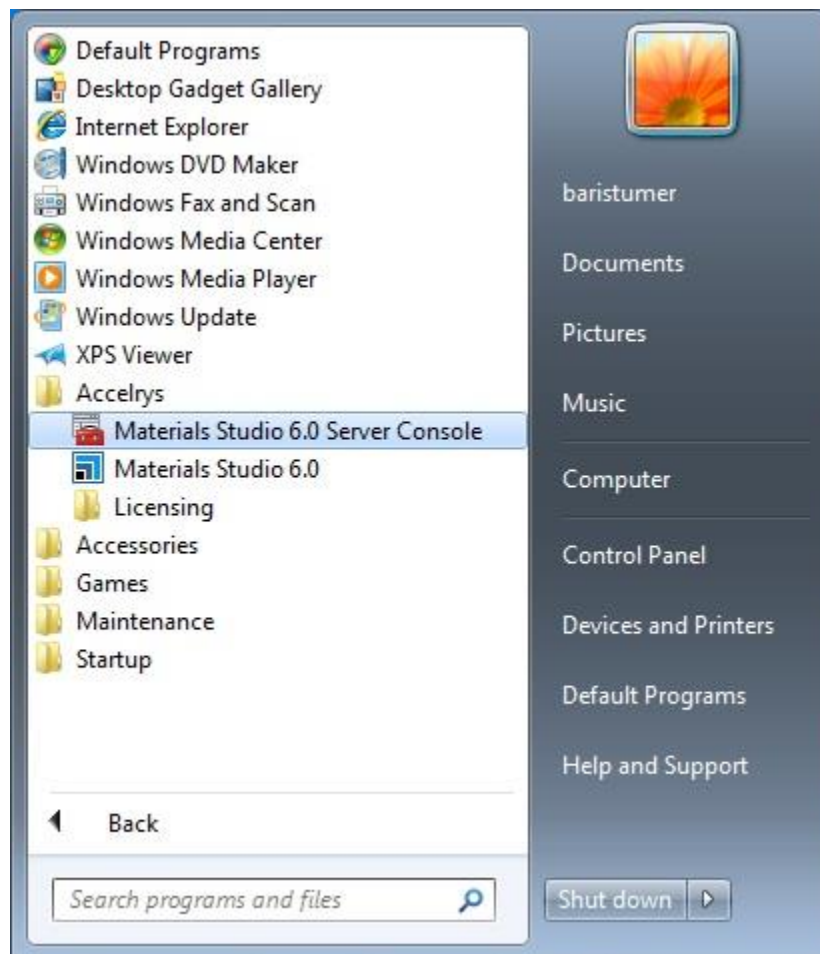


10. Type the license server information like the picture below. And press “Next” button to finish installation. Use your own license server only; for e.g. **licence06.xxx.edu** and port **1715** (not the one shown in the picture below)

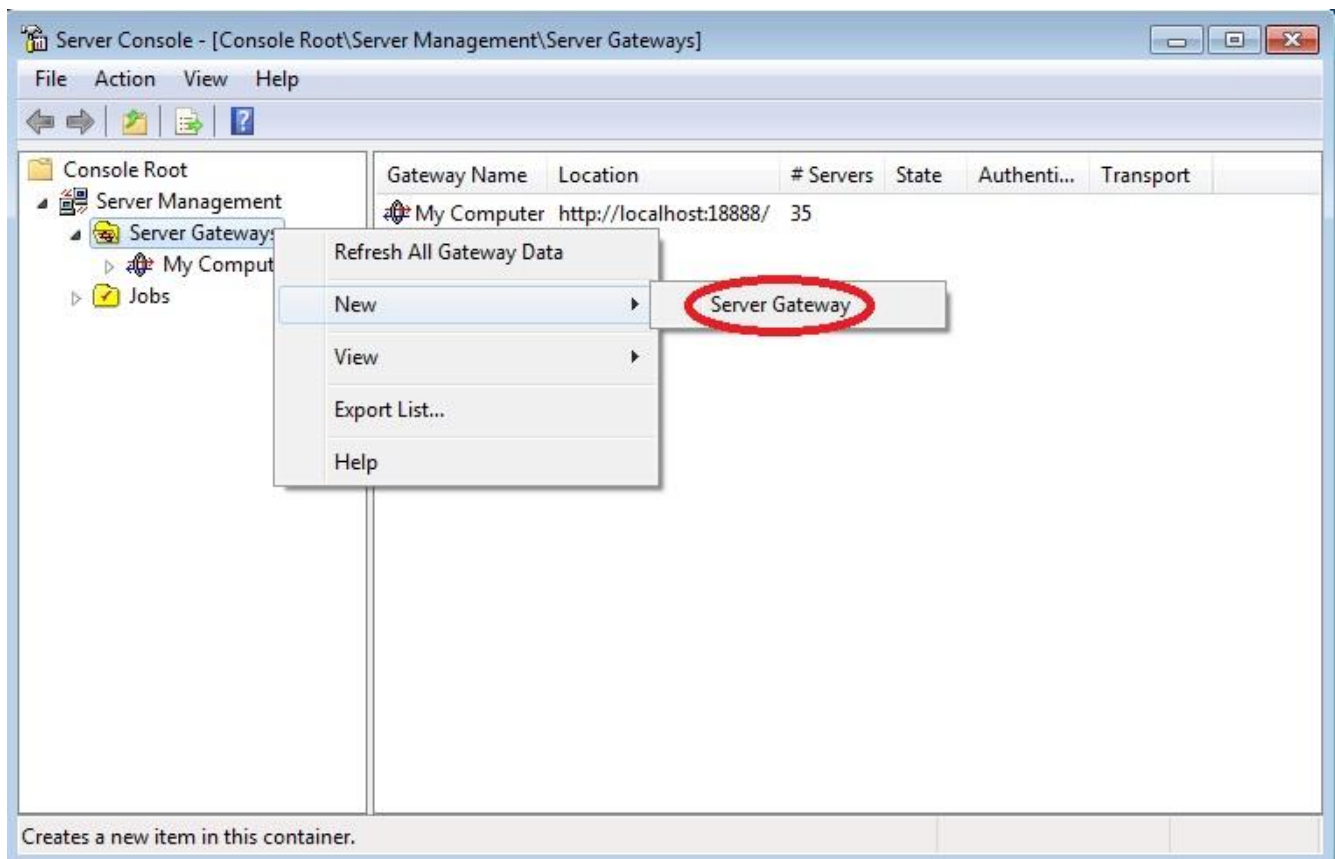


## 2. Materials Studio 6.0 Server Console Setup:

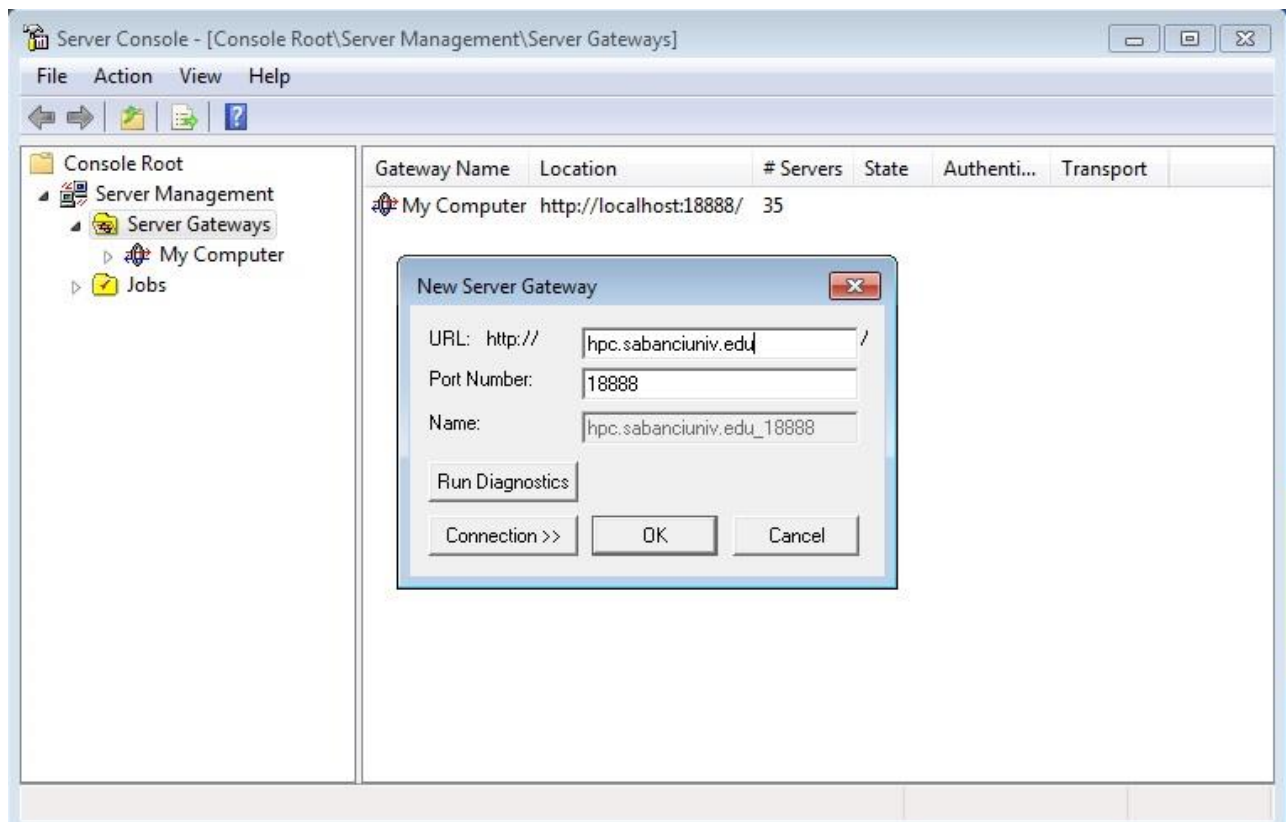
1. Open the Materials Studio program form Start Menu



2. Right click on “Server Gateway” then select New and Server Gateway

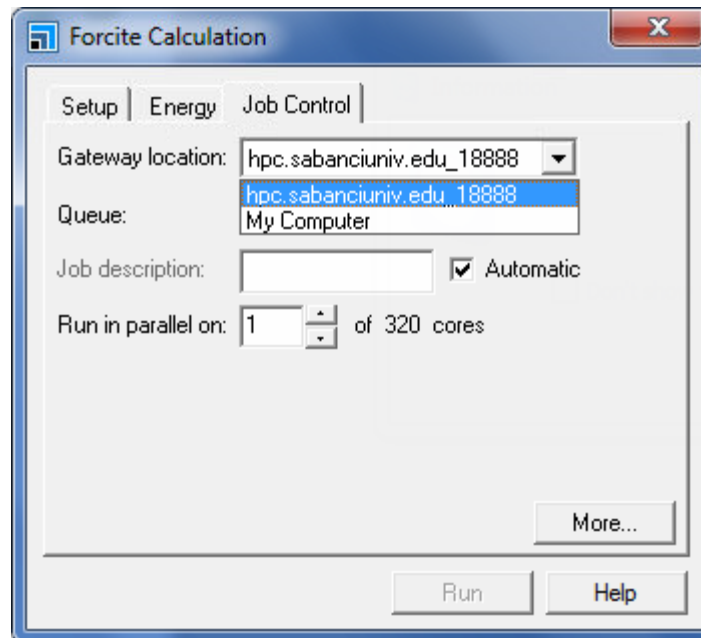


3. Type the informations below for compute server. Use **login.superbilgisayar.tr** (not the one shown in the picture below).



### **3. Send Jobs to Materials Studio 6.0 Server:**

1. Open a Materials Studio Project then select Modules
2. Select your calculation method from the menu.
3. For example, if you plan to do Forcite calculation on remote server, select the Job Control button and select Gateway location. Finally press “Run” button at below.



If you need help for installation, please send an e-mail to [contact@performatrica.com](mailto:contact@performatrica.com)